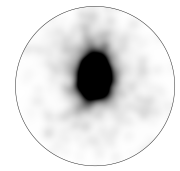
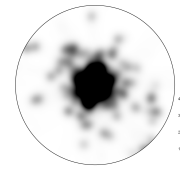


## **Supplemental data**

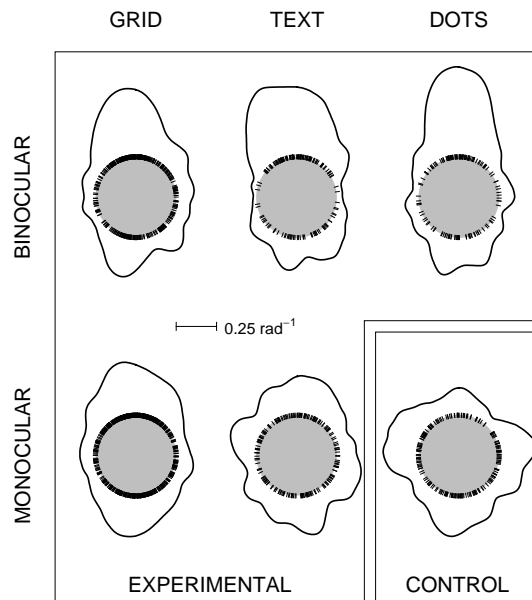
CB



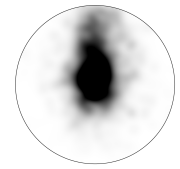
EXPERIMENTAL



CONTROL



VC



EXPERIMENTAL



CONTROL

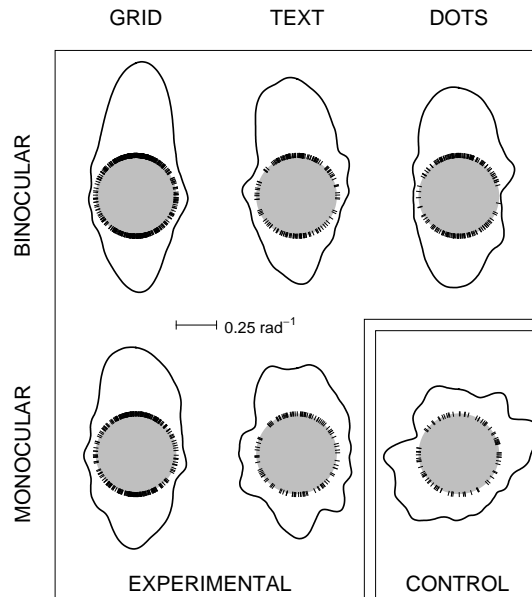
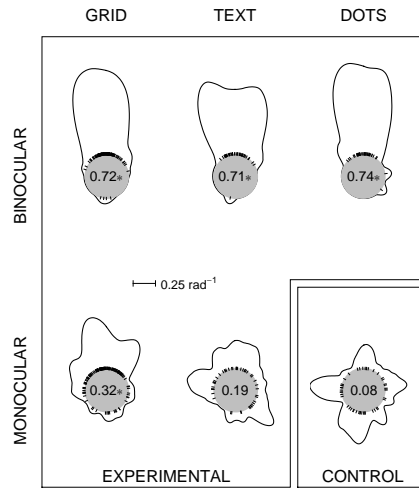
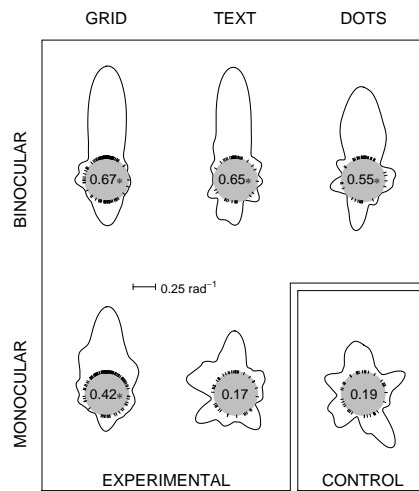


Figure S1: Results of the first experiment, presented in the same format as Figure 2, for the other two subjects. See Figure 2 for explanations and Table 1 for quantitative results.

CB



SV



VC

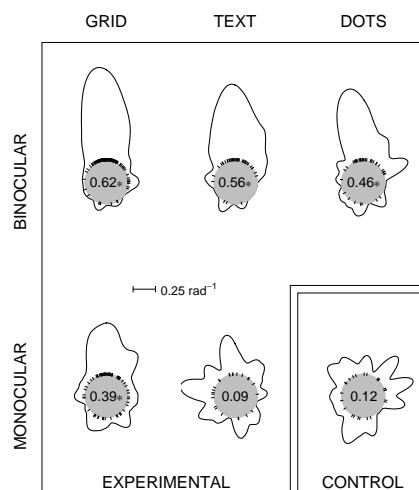


Figure S2: Distributions of *initial* saccade directions for the three subjects in the first experiment. See Figure 2 for explanations. Values of the Rayleigh  $R_0$  anisotropy parameter are given inside the gray circles, and marked with “\*” when the Rayleigh test yields a significant deviation from isotropy ( $p < 0.05$ , Bonferroni corrected for 6 tests).

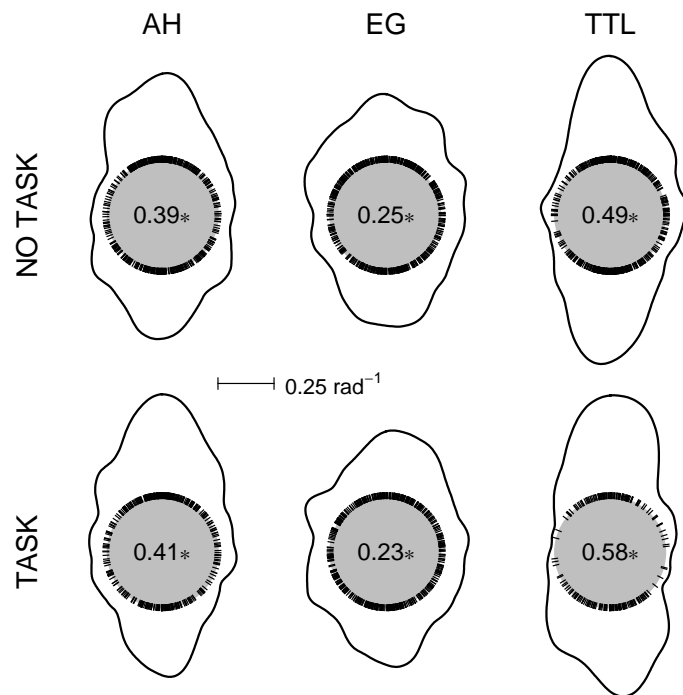


Figure S3: Individual subject data for the “no-task” and “task” conditions of the second experiment, showing distributions of saccade directions (see Figure 2 for explanations), along with values of the Rayleigh  $R_0$  anisotropy parameter (inside gray circle), marked with “\*” when the Rayleigh test yields a significant deviation from isotropy ( $p < 0.05$ ).

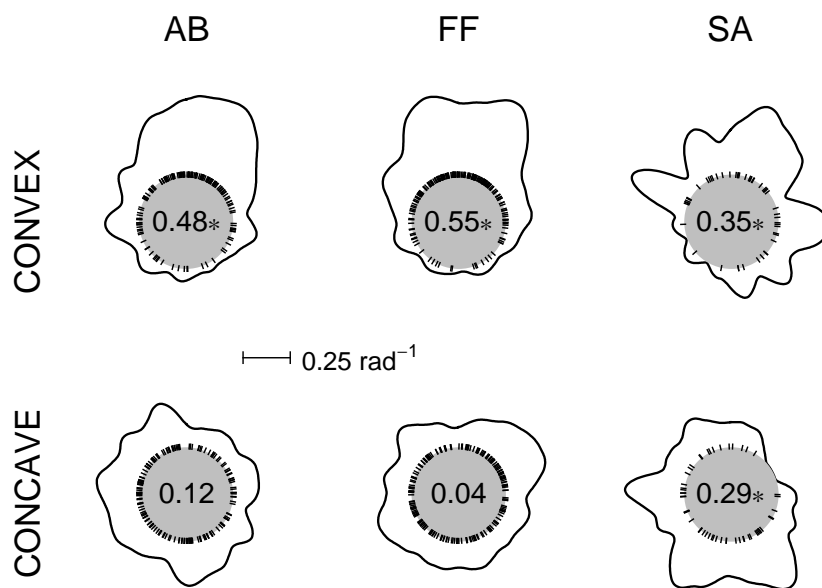


Figure S4: Individual subject data for the convex and concave stimuli of the third experiment, showing distributions of first saccade directions (see Figure 2 for explanations), along with values of the Rayleigh  $R_0$  anisotropy parameter (inside gray circle), marked with “\*” when the Rayleigh test yields a significant deviation from isotropy ( $p < 0.05$ ).