

THROUGH THE EYE, SLOWLY: DELAYS AND LOCALIZATION ERRORS IN THE VISUAL SYSTEM

John Schlag and Madeleine Schlag-Rey

Reviews on the visual system generally praise its amazing performance. Here we deal with its biggest weakness: sluggishness. Inherent delays lead to mislocalization when things move or, more generally, when things change. Errors in time translate into spatial errors when we pursue a moving object, when we try to localize a target that appears just before a gaze shift, or when we compare the position of a flashed target with the instantaneous position of a continuously moving one (or one that appears to be moving even though no change occurs in the retinal image). Studying such diverse errors might rekindle our thinking about how the brain copes with real-time changes in the world.

Among all the remarkable tasks that our visual system can perform, it would seem that locating something should be one of the easiest, especially if this 'something' is a mere spot of light, which, unlike a real object, requires no processing for identification. We know that visual cells in the brain have a receptive field, opening a kind of window on part of the world. So why is the selective activation of a set of these cells not sufficient to indicate where a spot of light is located? Many psychophysical experiments, old and new, tell us that visual localization is not that simple. Systematic errors occur, particularly in the presence of motion, whether of gaze or of the objects in our field of vision. Whenever things change, accurate timing of events becomes crucial. Under these circumstances, localization deteriorates because the visual system is too slow. Long and unreliable delays are involved in processing visual information in the retina and, ineluctably, such delays result in spatial errors. Here we consider three conditions in which localization errors happen — some unnoticed, others giving rise to strong illusions. These three conditions are smooth pursuit of a moving object, presentation of a flash in the dark just before a saccadic eye movement, and presentation of a flash in the presence of a moving stimulus. These conditions are usually the preoccupation of specialized research groups, perhaps

not always aware that they are facing the same type of problem. Bringing together their findings, and the ideas that they generate, might provide a common perspective.

Mislocalization during smooth pursuit

When ocular smooth pursuit is perfect, eye velocity matches stimulus velocity and, at any instant, the eyes point accurately at the physical location of the pursued stimulus. Were it otherwise, the image of the stimulus would slip off the fovea and, automatically, this position error would trigger a corrective saccade. Remarkably precise, continuous aiming is achieved despite the fact that there is a long delay between the occurrence of a visual stimulus and its perception by the brain. Hazellhoff and Wiersma¹ referred to this delay as 'perception time'. Some of it is consumed by processing in the retina and the rest by processing in visual areas. In macaques, responses to visual stimuli can be recorded after ~60–100 ms in several cortical visual areas, including the primary visual cortex (V1)². However, there is no good test to determine where 'visual perception' occurs. In FIG. 1a, the progression of the visual signal at three stages during smooth pursuit is summarized. On the left, the physical signal of target T impinges on the retina at time $t_n - x$. In the centre, the signal has been processed by the retina. This has taken ~40 ms, during

Department of
Neurobiology,
UCLA School of Medicine,
Los Angeles,
California 90095-1763,
USA.
e-mails: jschlag@ucla.edu;
msr@ucla.edu
DOI: 10.1038/nrn750

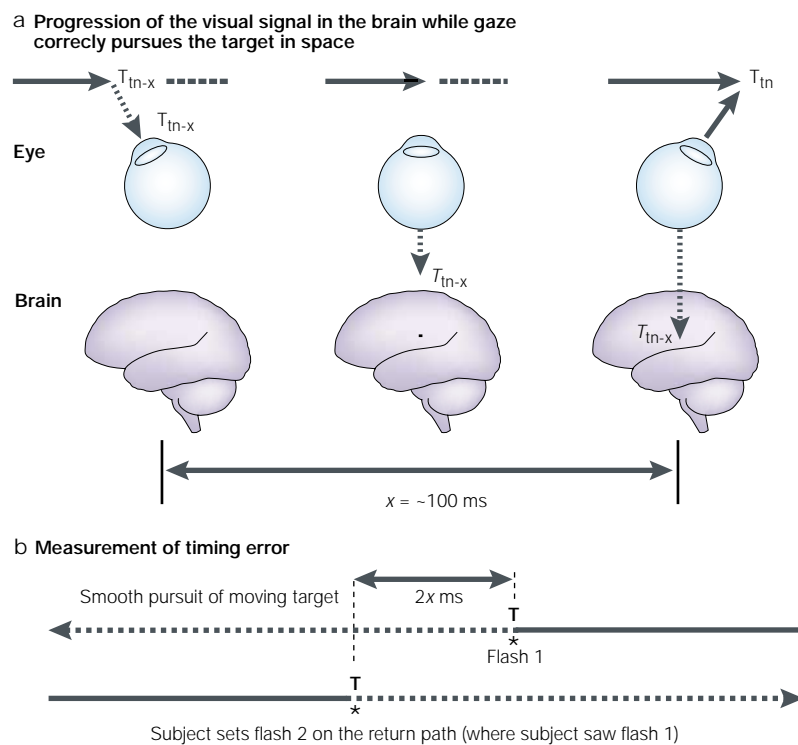


Figure 1 | Effect of visual delay in smooth pursuit. a | Schematic representation of the progression of the visual signal generated by moving target *T* while the eye smoothly pursues it. From left to right are shown three selected snapshots in the course of this progression. On the left, the physical signal of target *T* impinges on the retina at time t_{n-x} . In the centre, the signal has been processed by the retina. This has taken ~ 40 ms, during which the eye has moved as shown. On the right, the image *T* of the target *T*, as it was at time t_{n-x} , reaches the hypothetical level of perception. But now the eye is looking at T_{tn} . **b** | Measurement of mislocalization during smooth pursuit. During pursuit from right to left, a spot of light (flash 1; upper trace) is presented in perfect alignment with moving target *T*. A second marker (flash 2; lower trace) appears during the return trip of *T* (from left to right); the subject's task is to position flash 2 with a mouse so that its location coincides with that at which flash 1 was perceived. The subjects never see the two markers at the same time. Subjects reveal their misperception by placing the markers apart. The marker separation theoretically represents the sum of two position errors ($2x$ ms): the mislocalization when the target moves in one direction plus the mislocalization when the target moves in the opposite direction. Adapted with permission from REF. 5 © 2001 Elsevier Science.

which the eye has moved as shown. On the right, the image *T* of the target *T*, as it was at time t_{n-x} , reaches the hypothetical level of perception. But now the eye is looking at T_{tn} .

Because of the delay, when perfect smooth pursuit keeps our gaze on a moving stimulus, what we perceive at a particular point of its trajectory cannot be the stimulus as it is physically at that point. Rather, we perceive it as it was x ms earlier^{1,3,4}. Imagine that something happened to that stimulus x ms ago (for example, it changed colour, size or shape for a brief instant, or it simply vanished); if the brain matches the perception of the event with the site at which the eyes are now looking, the stimulus change will be seen at the wrong place (ahead in the direction of movement in this case). This is what is meant by 'mislocalization', and is the focus of this review.

In fact, this kind of mislocalization does occur during pursuit. To show it, subjects can be asked to follow a target that is moving predictably back and forth, in a straight horizontal line at a sinusoidal speed (FIG. 1b).

To perform the test correctly, the subject's head is immobilized, and the experiment is run in the dark to avoid interference from visual cues (an important point, as will be shown below). During pursuit from right to left, a spot of light (flash 1), used as a marker, is presented in perfect alignment with the moving target *T* (upper trace in FIG. 1b). A second marker (flash 2 in the lower trace) pops up during the return trip of the target *T* (from left to right), and the subject's task is to position flash 2 with a mouse so that its location appears to coincide with the location at which flash 1 was perceived. Note that the subjects never see the two markers at the same time. Subjects would be able to match the positions of the markers perfectly if there were no target to pursue. But, in this task, they reveal their misperception by placing the markers apart (FIG. 1b). The marker separation theoretically represents the sum of two position errors: the mislocalization when the target moves in one direction plus the mislocalization when the target moves in the opposite direction. Brenner and his collaborators⁵, who devised this experiment, found that each localization error corresponds to a distance of pursuit travelled in ~ 100 ms. They conclude that the brain probably does not compensate for the delay in the sensorimotor loop that controls pursuit.

FIGURE 1a illustrates only the visual delay afferent to perception, but there are other, smaller delays in the sensorimotor loop. We did not include them for two reasons. First, we do not know where the visual signal of 'what-we-see' and the corresponding signal of 'where-our-eyes-are-pointing-to-at-that-time' converge in the brain. Second, we do not know where the signal of eye position originates and how much time it takes to access it. It might be a feedback signal (corollary discharge) arising close to the point of movement initiation or further downstream, closer to the motor neurons, or else it could be a sensory (proprioceptive) feedback signal from the muscles that execute the eye movement. These feedback loops differ in length⁶. Neurons carrying signals that are modulated as a function of the eye position in the orbit have been recorded in several structures. Those that are found in the dorsomedial aspect of area MST (in the medial superior temporal sulcus in macaques; FIG. 2) are the most likely to be used in pursuit⁷. If the pursuit system conforms to the general rule, the synchrony of events in the world is judged by the brain on the basis of the synchrony of the inputs that signal these events. This is known as the Paillard–Fraisse hypothesis^{8,9}.

Localization errors during smooth pursuit illustrate the point that synchrony of signals within the brain does not match synchrony of the corresponding events in the outside world. Because the speed of nervous signals is not infinite, we need to be specific when we talk about the 'present time' or 'simultaneity'. Do we mean present time in the world, or time as we perceive it at present? Do we mean simultaneity of events in the world, or simultaneity of their signals in the brain¹⁰? In the next two cases, this point will become crucial as we realize how easily uncertainty in timing translates into uncertainty in spatial (and possibly other) dimensions.

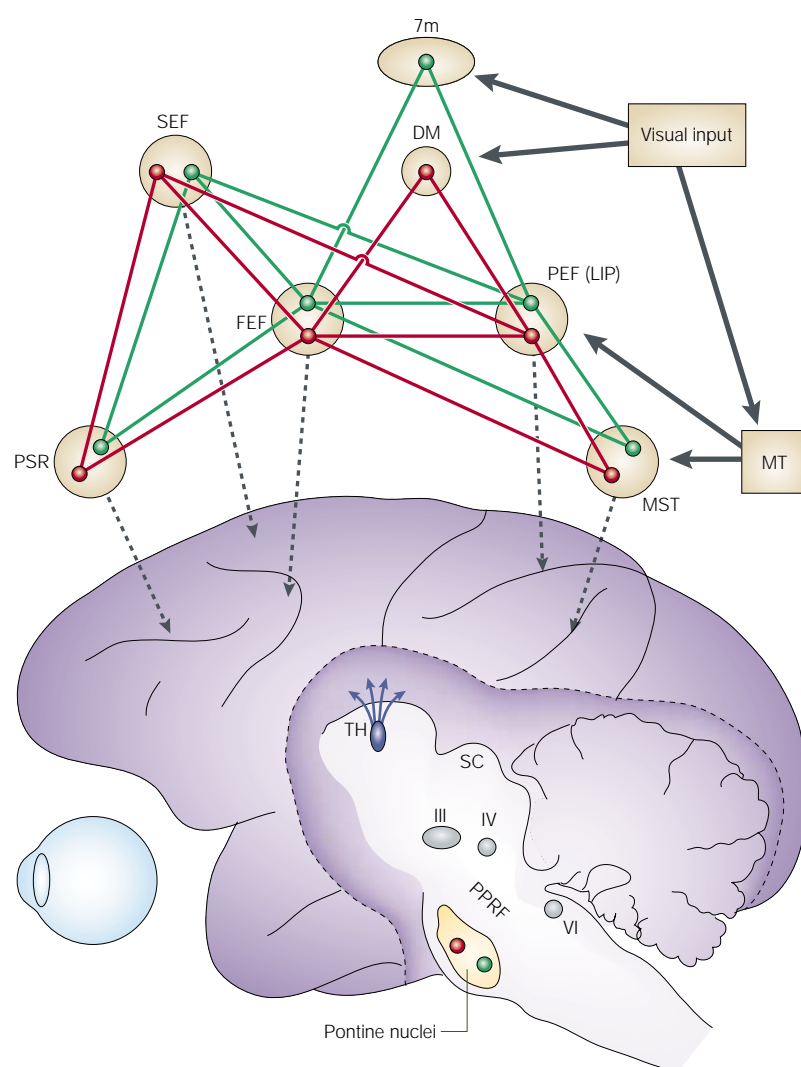


Figure 2 | Interconnections between oculomotor centres for saccades and smooth pursuit. From top to bottom: parallel cortico-cortical networks for controlling smooth-pursuit eye movements and saccades, proposed by Tian and Lynch¹⁰⁵ on the basis of anatomical and physiological studies in monkeys^{105–111}. The upper diagram represents a complex communication network that keeps pursuit and saccade channels separate between nodes, but which favours intranode interactions. The latter (not shown) are indicated by the systematic representation of the two oculomotor subsystems in the main eye fields. Reciprocal connections are indicated by green lines for pursuit and red lines for saccades. Arrows from the upper diagram to the brain point to the location of the main cortical oculomotor centres. In a window that is opened to visualize the brainstem are shown: the central thalamus (TH), which relays eye-position signals from subcortical structures to cortical centres¹¹²; the superior colliculus (SC), which receives descending projections from the frontal eye field (FEF), the supplementary eye field (SEF) and the parietal eye field (PEF–LIP); the nuclei that innervate the extrinsic eye muscles — III (oculomotor), IV (trochlear) and VI (abducens); and the main pre-oculomotor centres, which carry segregated signals for pursuit (for example, the dorsolateral pontine nuclei) and saccades (for example, the paramedian pontine reticular formation, or PPRF). Functional relationships between saccades and smooth pursuit are discussed in REF. 113. 7m, medial parietal visual area 7; DM, dorsomedial visual area; LIP, lateral intraparietal area; PSR, principal sulcus region. Adapted with permission from REF. 105 © 1996 American Physiological Society.

CLOSED LOOP

A system in which the input is made dependent on the output by feedback.

The experiment described above characterizes one of two types of localization. When subjects had to indicate where a moving target was at a particular time, specified by a marker, they had to rely on the stored representation of where they were looking at that time. As this localization is made with respect to the observer, it is

referred to as ‘egocentric’. Egocentric localization should be distinguished from another type of localization — known as ‘allocentric’, ‘exocentric’ or ‘relative’ — which relies on the spatial relationships between spatially and temporally close visual cues.

Perisaccadic mislocalization

Whereas smooth pursuit allows us to track targets that are moving at reasonable speeds, such as aeroplanes, saccades are abrupt movements that point the eyes as fast as possible in a new direction. The two mechanisms differ in several respects. Smooth pursuit is initiated by stimulus velocity (with some acceleration boost¹¹), whereas saccades are programmed to reach a goal. Smooth pursuit operates in a CLOSED LOOP, but saccades cannot, because they are terminated before the visual feedback of the eye displacement has time to reach the brain. These mechanisms are separate anatomically (FIG. 2). At the cortical level, pursuit is controlled mainly by area MST, and saccades to visual targets are controlled mainly by the frontal eye field (FEF). Both areas have separate projections to subcortical structures such as the superior colliculus and pontine nuclei. However, MST and FEF are linked by reciprocal connections with other visual–oculomotor centres, which form nodes in a cortical network that programmes saccades and smooth pursuit (FIG. 2).

Like smooth pursuit, saccades can cause stimulus mislocalization, but, curiously, this mislocalization is not limited to the brief moment when the eyes are in motion. It extends from at least 200 ms before to 100 ms after the saccade. ‘Perisaccadic’ mislocalization seems to be especially paradoxical when a spot of light is flashed in the dark just before the eyes start to move. Even though both the eyes and the stimulus are stationary at that time, subjects perceive the stimulus as being far from its actual location (in the direction of the saccade by as much as 70% of its amplitude^{12,13}). In the following discussion, we consider stimulus presentations that precede saccades rather than accompany them, because, in the latter case, physical displacements of the eyes blur the image¹⁴, making it difficult to distinguish between mislocalization due to mechanical disturbances and that attributable to neural processes.

Measurements of perisaccadic mislocalization were first made in the 1960s^{15,16}. At first, it was thought that this mislocalization was strictly perceptual (illusory) and that movements towards the stimulus (either saccades¹⁷ or hand pointing¹⁸) remained accurate. However, more recent studies found practically no difference in time course between perceptual errors (by verbal report or comparison with a visual reference) and targeting errors (by looking at the stimulus site^{12,13,19–22} or pointing to it²³) in experiments performed in total darkness.

To understand the possible source of perisaccadic mislocalization, it is useful to ask how the brain can localize a stimulus in total darkness when the eyes move between the appearance of the stimulus and its capture by a saccade. The classic experiment designed for this purpose is called the ‘double-step’ (FIG. 3). While the subject fixates point F, two targets, A and B, are

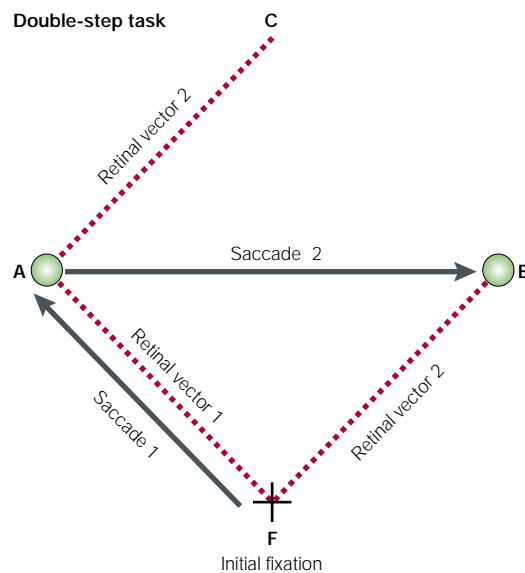


Figure 3 | **Layout of the double-step task.** A subject fixating point F has to make saccades successively to sites A and B, where spots of light have been flashed in the dark. How is the trajectory of saccade 2 programmed? If based only on the retinal vector 2, it should terminate at C.

flashed in succession within, say, 150 ms. The subject is instructed to look successively at the target sites. As the saccade latency is longer than 150 ms, both stimuli are already off before the first saccade starts. Looking at the first target site is straightforward; it can be done solely on the basis of stored retinal information. Indeed, saccade 1 equals retinal vector 1 in FIG. 3. However, looking at the second target is more difficult, because the eyes are no longer at starting point F, from which the retinal coordinates of the second target (retinal vector 2) were obtained¹⁷. There are two possible solutions. The allocentric solution is to store in memory the spatial relationship between A and B, which can provide the vector A→B. The egocentric solution is to sum the retinal coordinates of stimulus B (retinal vector 2) with the coordinates of the effected eye displacement to A (saccade 1) to provide the coordinates of stimulus B in space. The egocentric solution seems to be the only one possible in the double-step situation when subjects perform this task in the absence of visual cues (for example, when saccade F→A is executed voluntarily with no stimulus being presented at point A²¹). There is good psychophysical evidence for the existence of an internal signal of eye position or eye displacement in the brain^{24–27}. However, we do not know exactly how the computation that involves an eye-position signal (EPS) is implemented. Two main hypotheses have been offered: vector subtraction (postsaccadic^{28,29} or presaccadic³⁰) and neuronal network³¹.

When, in the double-step, the second stimulus is flashed shortly before the saccade, its signal might reach the brain after the saccade. Indeed, the afferent visual delay can be as long as 100 ms, whereas a 20° saccade usually lasts less than 50 ms. Such a difference is enough

to produce a perisaccadic mislocalization: in fact, it would not be easy to explain why mislocalization should not happen. Human observers can easily locate a brief spot of light that is presented in the dark more than 300 ms before a saccade. They can report its position, look at its site and point to it. But when, in successive trials, the stimulus is presented closer and closer to saccade onset, a localization error develops and grows both in size and in variability. The error peaks with flashes presented at saccade onset, and then sharply declines throughout the duration of the movement and afterwards (FIG. 4a,b).

In the dark, the internal signal that represents eye position is crucial, because no other cues are available. In the past, this signal was often called ‘extra-retinal’, a label that (unfortunately) stresses what it is not. Here we call it ‘eye-position signal’ or ‘EPS’ in a general sense, without implying that it represents an absolute position or a relative displacement. As mentioned before, this signal could arise from an REFERENCE COPY of the motor command or from proprioceptive (sensory) feedback of the movement. It could also be a signal of the intended saccade. The hypothesis of a signal of intended movement is interesting because it can account for anticipatory responses that have been recorded from neurons in the parietal cortex³², FEF³³ and superior colliculus³⁴, which occur before a stimulus site has entered the cells’ receptive fields.

If a stimulus before a saccade is mislocalized, the error must arise from the visual signal, the EPS or the temporal match of their combination. The visual signal is not likely to be in error. Making this reasonable assumption, one can try to recover, from recorded data, the time course of the hypothetical EPS by subtracting the retinal coordinates of the stimulus from their coordinates in space (FIG. 4c,d). This analysis reveals that instead of reproducing the real time course of the saccade, the hypothetical EPS is considerably distorted: it begins ~200 ms before the saccade itself begins and it is stretched in time^{12,13,19,20,22,23,35} (FIG. 4d).

Is the EPS really damped (stretched in time), or does it just appear to be so because noisy data have been pooled together? No obvious neurophysiological constraints can explain the signal distortion³⁶. We know that the nervous system can handle signals of much higher frequencies than those of saccades. The explanation for the mislocalization might lie in the way very brief visual stimuli are processed. Because such stimuli have long visual persistence, the determination of their occurrence might be artificially delayed^{37,38}. Another explanation could be that the time course of the EPS is correct, but the brain makes random errors about the timing of the stimulus onset^{22,39}. Timing errors are common⁴⁰ and they occur in other movements; for instance, of the hand⁴¹. A merit of this timing-error hypothesis is that it accounts not only for the extended time course of the errors, but also for their wide variation.

Only visual events that have a clear onset near the time of a saccade are mislocalized. If a stimulus is flashed 10 ms before a saccade, it is perceived far away from its real location, but if a stimulus is flashed 200 ms before a saccade, it is localized accurately. How do we perceive a stimulus that starts 200 ms before a saccade

REFERENCE COPY
A copy of a motor command that is sent back to the central nervous system to inform it of the executed movement.

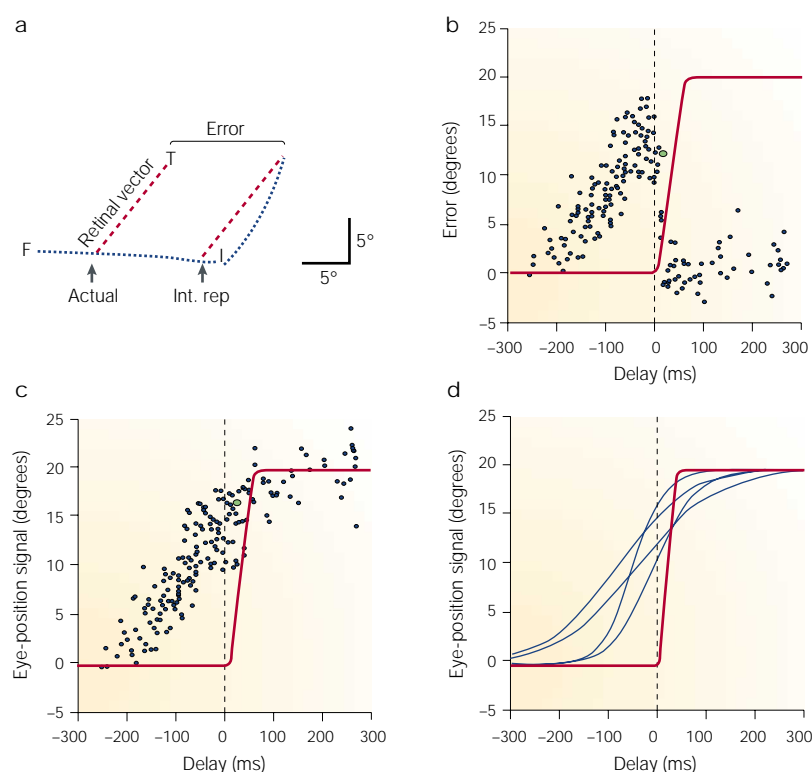


Figure 4 | Steps involved in determining the time course of the hypothetical eye-position signal. **a** | Saccade trajectories in *xy* coordinates for a single experimental trial. Dots represent the eye position sampled at 2-ms intervals. The initial saccade is from the fixation point F to the initial target I. The second saccade is the subject's attempt to localize the test flash T (presented when the eye was at the point of the trajectory marked 'Actual'), resulting in an error of roughly 12°. Graphically subtracting the retinal vector (dashed line) from the end point of the second saccade indicates the value of the hypothetical eye-position signal (EPS), marked 'Int. rep' for internal representation. **b** | Magnitude of the localization errors from a single subject, plotted with respect to the delay between the presentation of the test flash and the onset of the initial saccade (at time 0 ms). Positive errors are errors in the direction of the initial saccade. The solid line depicts the time course of a typical initial saccade. The open circle represents the error value found in the trial shown in **a**. **c** | Time course of the hypothetical EPS, obtained by subtracting the actual time course of the saccade from the time course of mislocalization errors shown in **b**. **d** | Best-fit sigmoidal curves (blue) showing the time course of the hypothetical EPS for four subjects. Adapted with permission from REF. 13 © 1993 American Psychological Society.

and is turned off 10 ms before the saccade? Does it appear to be moving from an initial site, which is veridical, to a final site, which is illusory? Fortunately not, otherwise the world would appear to slide with that saccade. That the stimulus is not perceived to move is strong evidence that the brain does not continuously update the position assignments of objects around us. If they are continuously visible and do not actually move, by default, it is simpler for the brain to assume that they are still where they were last seen. This is one of the main bases of SPATIAL CONSTANCY. It also means that the brain does not need to access the EPS constantly.

It is sufficient for the EPS to be 'sampled' only once: when a new object appears²². Hershberger has provided a nice demonstration of this sampling⁴². In his experiment, a stimulus is flashed at a frequency (for example, 120 Hz) that is well above the critical flicker frequency. Therefore, the stimulus is seen as a continuous light as long as the eyes are immobile. But as soon as a saccade starts, the image of the stimulus is displaced on the

retina. Immediately, the first flash jumps in the direction of the saccade, and then the subsequent flashes gradually return the stimulus image to its veridical position. At first sight, one might think that perceptual mislocalization starts only with the saccade. However, before the saccade, the EPS must not have been sampled because the stimulus onsets, above critical flicker fusion, were too fast to trigger sampling.

Many neurophysiological single-unit studies concern the double-step paradigm, but we found only one⁴³ that dealt with the stringent timing conditions that produce mislocalization. Practically all double-step experiments show that eye-movement neurons, which discharge in preparation for a saccade of a given amplitude in a particular direction, do so in most circumstances, and those include the second of the double-step saccades. This seems to be true whether these neurons are recorded in the superior colliculus, thalamus, basal ganglia or cerebral cortex. Other neurons, called 'quasi-visual', fire tonically when the site of a previous visual stimulus (which is no longer visible) is brought into their receptive field by a saccade. The existence of such neurons indicates how the nervous system can keep a memory trace of goal locations⁴⁴.

Microstimulation in oculomotor centres has been important in the study of experimental situations that are similar to the double-step and perisaccadic mislocalization in monkeys. In some central oculomotor structures, such as the superior colliculus and FEF, microstimulation triggers a saccade of a given vector (amplitude and direction) that is specific to the stimulated site. Long ago, it was noticed that if two of these saccades are evoked in rapid succession, the trajectory of the second saccade is often deviated⁴⁵. Sparks and Mays⁴⁶ studied the interaction between successive saccades, one visually guided, the other electrically evoked by stimulation of the superior colliculus. They observed that the second saccade is redirected by the first, exactly as in the double-step paradigm. The modified trajectory has all the characteristics of 'compensation' for the deviation in eye position introduced by the first saccade. When the second saccade is evoked by electrical stimulation, this implies that stimulation specifies a goal, not a trajectory⁴⁷.

If this is so, it might be possible to replace a visual target by electrical stimulation to produce a goal in a double-step task, and try to induce perisaccadic mislocalization^{47–49}. The advantage of this strategy is that an electrically evoked signal, which is theoretically equivalent to the visual signal of a real target, bypasses the whole afferent visual pathway, including the retina. In this way it was shown that electrical stimulation, applied at different times during and after natural saccades, evokes compensatory saccades that vary in their dimensions depending on the structure stimulated and the exact timing of stimulation^{47–52}. From data collected in the FEF⁴⁹, the time course of the EPS was computed using the same method as applied in experiments performed with visual targets. The results show the same damping of the EPS as in behavioural experiments. However, the EPS starts earlier (that is, it appears to precede the actual

SPATIAL CONSTANCY

The perceptual assumption that objects are still where they were in the world when the retinal shift of their image is caused by our own movements.

saccade by as much as 50 ms), as expected if the afferent visual delay is bypassed. These experiments confirm the results of perisaccadic mislocalization by using an excitatory drive applied directly within neural structures. They also support the view that the length of the visual afferent delay has an important role in perisaccadic mislocalization.

In the psychophysical experiments discussed so far, human subjects were in total darkness and made saccades to flashed targets. This might be a scientifically useful situation, but certainly not one that fits any realistic set of circumstances. In everyday experience, visual cues are abundant and human subjects rely heavily on them (although with notable individual variations^{12,53}). Two main effects are observed when allocentric visual references are introduced in localization tasks. First, visual cues reduce the systematic bias of mislocalization in the direction of saccades, which is maximal in complete darkness²¹. This reduction indicates that the brain can combine the use of egocentric and allocentric cues in its spatial computations^{21,54}, and often settles on a compromise between what egocentric or allocentric information alone would advise⁵⁵. Even though egocentric and allocentric maps in the brain are usually regarded as different and separate, they have much in common. Perhaps an egocentric map is nothing but an allocentric map with a privileged pointer to mark the site on which the eye fixates, and perhaps also with other pointers to indicate how the head is oriented and where the hand is placed. This concept of pointers has already been used in modelling⁵⁶, but we do not know how the brain would implement the concept of a pointer.

The other observation is that allocentric information itself is strongly affected by the imminence of a saccade. When visual cues are presented in the dark at different times before the movement, their spatial relationships are disturbed⁵⁷, as predicted by the temporal course of the mislocalization effect that we have just described. Indeed, as mislocalization increases when a stimulus is flashed closer to saccade onset (FIG. 4d), two spots of light that are flashed successively in the dark just before a saccade will appear to be unequally displaced: the second one will be more displaced than the first in the direction of the saccade. However, in a lit environment, a further effect is observed: a general compression of visual space^{58–61}, which, unlike unidirectional mislocalization, cannot be accounted for simply by visual delays. One of its most dramatic demonstrations is obtained by presenting four equally spaced vertical bars just before a horizontal saccade. The subjects perceive the four bars straddling the saccade target as being fused into one^{59,61}. In addition, for reasons that are not yet understood, the contraction of visual space is asymmetrical, depending on the direction of the saccade^{15,58,59,62}. The critical period during which allocentric cues have this effect is after the saccade⁶⁰ and, indeed, there are other indications that the postsaccadic period is very important to clear, refresh or update pre-saccadic information^{39,63}. Saccades appropriately provide occasions to sample the environment. They are

crucial moments in which to renew our contacts with the world. As MacKay suggested, we should think of saccades as questions.

In summary, a saccade is a very destabilizing period during which the eyes are moving at high speed. Suddenly, the brain has to shift its egocentric reference, which is its only available cue when movements must be programmed towards a goal in the dark. A long and unreliable afferent visual delay perturbs the timing for combining the visual signal and the EPS, an operation that is crucial for the localization of stimuli. The same kinds of problem that occur in smooth pursuit are encountered here, but they are exacerbated because a saccade is so fast that a mismatch of a few milliseconds can lead to an error of several degrees.

The flash-lag effect

If there is uncertainty about the time (and therefore the location) of an event (for example, a flashed spot of light) when the retina moves⁴⁰, is there also uncertainty when the stimulus moves (but not the retina)? Several illusions involving stimulus motion have been reported that are strikingly similar to perisaccadic mislocalization (for example, REFS 64–66). In the 1970s, MacKay used to show such an illusion to large audiences. After turning off the room lights, he swung at arm's length the control box of a Grass photostimulator while, with the other hand, illuminating the front panel of the box with a stroboscopic lamp flashing at a rate of ~3 Hz. There was a continuously visible red pilot light on the front panel of the Grass box. Everyone in the audience could clearly see the pilot light dancing in and out of the intermittently lit front panel of the box. The red pilot light appeared to be completely dissociated from the panel in which it was embedded.

Today, this illusion is best known by the name of 'flash-lag'. In the flash-lag effect, the perceived spatial relationship between a moving object and a stable one that is briefly visible appears to be distorted. In 1994, Nijhawan⁶⁷ renewed interest in this phenomenon by designing an ingenious set-up that not only produces the misperception, but allows its objective measurement. The set-up is a rotating bar made of three light segments (FIG. 5). The middle segment is continuously visible in the dark, and the outer two segments are briefly flashed when all three segments are aligned. The two flashed segments appear to lag behind the middle one, as shown on the right in FIG. 5. Most recent experiments have used a similar design with either a rotary or straight, forward-moving stimulus. It is worth noting that the display that consists of a straight, forward-moving stimulus does not differ from the one used in the smooth-pursuit experiment described earlier (FIG. 1b). The only difference is in the instruction to the subjects: instead of pursuing a stimulus, they now have to fixate a steady point while the stimulus moves across the retina.

In the past seven years, the flash-lag has been the object of an intense controversy. First, noting that the brain is getting only outdated information on the position of a moving object (as in smooth pursuit), Nijhawan^{67,68} interpreted the flash-lag as an attempt at

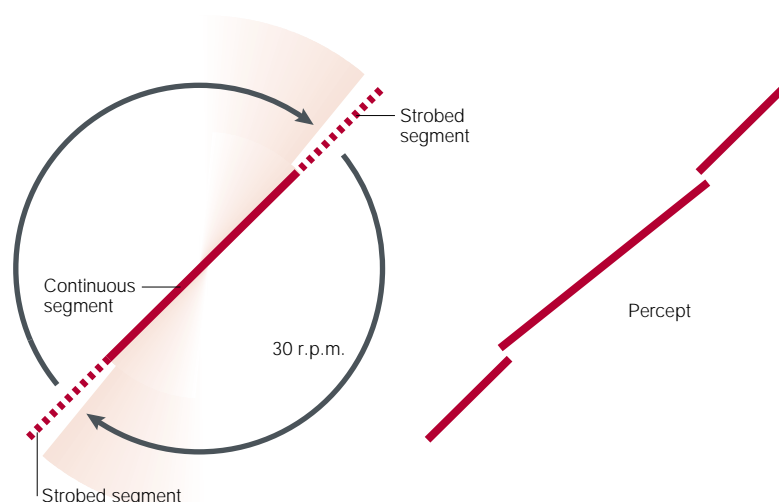


Figure 5 | **Nijhawan's flash-lag set-up.** A bar made up of three aligned luminous segments rotates clockwise at 30 r.p.m. The middle segment is continuously lit, whereas the external segments are strobed. The segments are perceived to be unaligned (as shown on the right). Adapted with permission from *Nature* (REF. 67) © 1994 Macmillan Magazines Ltd.

'latency correction' by the brain to compensate for long visual delays. He argued that to catch a moving object (such as a tennis ball), we cannot rely on the sluggish visual system to tell us where it is. Therefore, he proposed that the brain 'extrapolates' the location at which the moving object is perceived. Clearly, this is one of the most daring proposals of a top-down hypothesis. Here, 'top-down' means that somehow the brain is attempting to correct its own input from the senses (with bold disregard for the venerable: "*Nihil est in intellectu quod prius non fuerit in sensu*").

The parsimony principle does not very well tolerate top-down hypotheses unless all 'bottom-up' options have first been eliminated. Bottom-up hypotheses were soon advanced, invoking early visual mechanisms such as differences in visual latency^{69–72} or attention⁷³. We know that physiological latencies vary in the visual system. For instance, they are shorter the greater the stimulus luminance⁶⁹ and the closer the stimulus is to the fovea. Also, in terms of perceptual awareness (which might involve processing time⁷⁴), there are latency differences^{75,76}, such that colour might seem to be perceived before orientation, which is perceived before motion⁷⁷. Along these lines, it is possible to explain the flash-lag effect as a consequence of differences in latency, if one assumes that the latency of a stationary stimulus (a flash) is longer than the latency of a moving stimulus^{69–71}. There are good justifications for this assumption, including characteristics of retinal processing⁷⁸. A model based on latency differences works as follows. Imagine that the brain regards as simultaneous events that produce signals that arrive at the same instant^{9,79}. If latencies are unequal, visual signals judged to be simultaneous must have departed at different times. Being faster, the signal from a moving stimulus would have left later; that is, from a more recent position along the stimulus trajectory. This is how an error in time could lead to an error in space.

Several variants of Nijhawan's original experiment were designed to determine how the illusion survives the removal or modification of single elements of the original set-up (such as the flash, the stationary stimulus or part of the moving stimulus). Presenting sequences of flashes, Lappe and Krekelberg^{80,81} showed that the flash-lag effect decreases when the number, duration, frequency or predictability of the flashes are increased. The effect depends on whether the moving stimulus is perceived as an object of which the flash is a part⁸². The magnitude of the illusion changes if the velocity of the moving stimulus changes after the flash⁸³, and the illusion completely disappears if the moving object is blanked immediately after the flash, clearly indicating that the critical period is the one that follows the flash^{70,71,84}. On the other hand, the illusion remains intact if the flash is replaced by a continuously lit stimulus and the moving stimulus transiently changes (in size, luminance or colour) when it passes in alignment with the stationary stimulus. In this case, it is still the moving stimulus that appears to be ahead, even though this perception no longer depends on a comparison with a flashed stationary stimulus. One can even remove all stationary references and use two vertical bars that move, one above the other, in opposite directions. If both change transiently (in size, luminance or colour) exactly when they cross each other, the two transient changes appear to be displaced with respect to each other in the direction of their motion⁸⁵. Clearly, it is not the flash that lags, but the changing stimulus that leads⁸⁶.

More general questions can be asked. Is real stimulus motion on the retina essential for the flash-lag effect, or can illusory motion produce it? Extended viewing of moving patterns induces a motion after-effect that causes the perception of motion in the opposite direction in the portion of the retina that has been adapted. If two parts of the retina are adapted to patterns moving in opposite directions, two stationary patterns presented afterwards appear to be displaced with respect to each other in the direction of the illusory movement⁸⁷, as the flash-lag effect would predict. In another study⁸⁸, subjects wear a helmet on which the stimulus display is attached in front of the eyes. The subjects fixate the display, which consists of a vertical bar with the upper third flashing and the lower two thirds continuously lit. Its displacement is linked to the movement of the head. Subjects are invited to oscillate their heads horizontally, and soon, in the dark, they perceive the flashing and continuous parts of the stimulus display as being dissociated from each other, just as in MacKay's experiment reported earlier. In a parallel study⁸⁹, subjects sit in a vestibular chair in darkness and are rotated at 100° s^{-1} for 1 min while they fixate a stimulus display in front of them. The display, attached to the chair, is similar to the one just described, but contains five vertical flashing lines (FIG. 6a). Subjects are required to decide which of these five flashing lines is aligned with a continuously lit long line. Again, subjects perceive a flash-lag in the seconds that follow the start or stop of their body

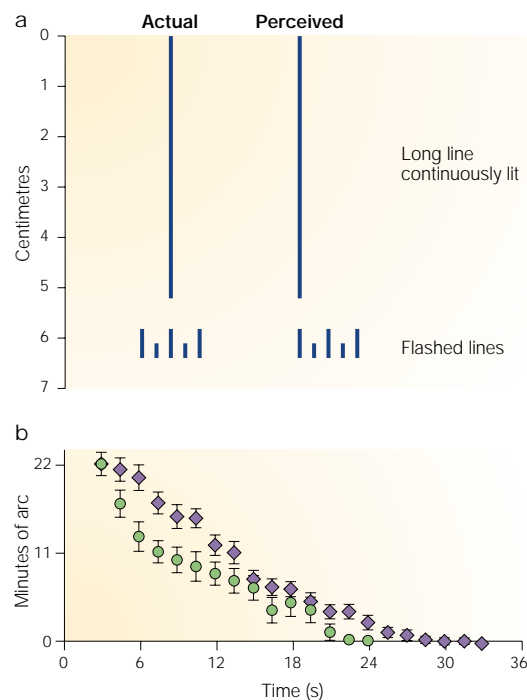


Figure 6 | **Flash-lag induced by rotation in a vestibular chair.** **a** | Scale reproduction of the actual display of light-emitting diodes (LED), and the perceived misalignment immediately after clockwise rotation has stopped. This represents a misalignment of 22 arcmin. **b** | Misalignment data from three subjects in a chair rotating at 100° s⁻¹ (blue diamonds) and 60° s⁻¹ (green circles). Time starts at the beginning or end of rotation. Adapted with permission from REF. 89 © 2000 Springer-Verlag.

rotation (FIG. 6b). Most remarkable is the effect triggered by stopping the chair rotation abruptly because, at that particular instant, all motion has stopped (of the eyes, body and stimulus), but the feeling of rotation persists and with it the illusion.

Finally, is movement itself even necessary? It can be replaced by the repetitive presentation of an invariant object⁹⁰, and a phenomenon very similar to the flash-lag occurs in an experiment in which the colours of two spots are compared⁹¹. One spot gradually changes colour (say, from green to red), and the other spot is flashed in an intermediate colour (for example, orange) that exactly matches the colour of the changing spot at the instant of the flash. Subjects perceive the flashing spot as greener than it actually is. One could call it a 'colour-lag', but the best term is probably 'change-ahead'. Indeed, the same authors have generalized their observations to changes in luminance, spatial frequency and pattern entropy, instead of changes in colour.

Obviously, the differential-latency hypothesis cannot account for all these diverse observations. Either the flash-lag is an ensemble of different phenomena — and some, indeed, are unusual⁹² — that have their own explanations, or there is one explanation common to visual change in general. One could go one step further and ask: do changes in modalities other than vision produce similar illusions?

Conclusions

Common to the three cases discussed (smooth pursuit, saccade and stimulus motion, or even stimulus change in general) is the fact that a decision has to be made on the instantaneous state (for example, eye position, stimulus position, colour or luminance) of a variable that is continuously and predictably changing. Of course, 'instantaneous state' is meaningless until the instant is specified⁸⁶. This is the role of an event and, indeed, there is an event in all three cases discussed (usually a flash in pursuit and flash-lag, or a stimulus onset in perisaccadic mislocalization). To find the instantaneous value of a changing variable, two conditions should ideally be met. One is that the timing of the event should be unambiguous whatever the reference. The second is that once the signal of the event is received by the brain, the information about the state of the changing stimulus should be either immediately available (in other words, already processed) or retrievable by extrapolation back in time. Apparently, neither condition can be fulfilled by the brain. In perisaccadic localization, for instance, subjects have great difficulty in deciding whether a flash occurred before, during or after a saccade, and they make large errors^{40,93}. There is no evidence that timing mechanisms working below the level of awareness can do better.

Once the signal of an event is received by the brain, it can be used for sampling, probing or starting a process. There is good agreement on the necessity of this step^{22,83,84,94,95}. However, some see this step as resetting an ongoing process⁸⁴, whereas others have proposed that the state of a changing variable is sampled only when an event occurs^{22,86}.

How is the state of a variable at a given instant determined by the brain when this variable changes? In the case of perisaccadic localization, most interpretations are given in terms of receptive fields being shifted on the occurrence of the saccade^{32-34,96}. An implicit premise of this hypothesis is that neurons involved in localization directly or indirectly receive inputs from a much larger retinal area (perhaps the whole retina) than is apparent when receptive fields are tested with the eyes fixed. If so, what really determines the position and size of receptive fields is not the span of retinal inputs ultimately impinging on these neurons, but the present or future direction of gaze.

In the case of pursuit and flash-lag, the changing variable is stimulus position. Very early in the visual pathway, signals of position and signals of velocity are segregated. Whereas in physics, velocity is simply the time derivative of position and is treated as such, in physiology, visual velocity is a primary dimension, no less fundamental than position. From the initial stage, our visual system has motion detectors and position detectors, ultimately contributing to motion maps and position maps in the cerebral cortex⁹⁷. In both types of map, cells have receptive fields. The position of a moving stimulus can be represented in two ways: by an instantaneous peak of neural activity in a position map, or by integration of a velocity signal. In smooth pursuit, Priebe *et al.*⁹⁸ postulate that motion-selective neurons

with a particular speed tuning are responsible for motion perception, whereas the sequential activation of receptive fields leads to the perception of change in position (but note that the two can be perceptually dissociated in the motion aftereffect).

In their explanation of the flash-lag, Krekelberg and Lappe⁹⁹ and Eagleman and Sejnowski⁸⁴ assume that an instantaneous stimulus position is computed by the brain by integrating velocity signals. Theoretically, this process takes more time than finding the peak of activity in a receptive field. First, integration is not instantaneous: it requires some sort of averaging over a defined period⁹⁹. Second, the results of the computation cannot be immediately available because they are based not on current data, but on data that follow the triggering event. Nonetheless, these results are referred to the only available time marker, which is the event itself (called subjective time¹⁰⁰). Eagleman and Sejnowski⁸⁴ created the term 'postdiction' to stress the very likely possibility that some of our perceptions depend on future events. Whereas most people tolerate the idea that the memory of their perception might be faulty, they are not ready to accept that their instantaneous perceptions depend on things that have

not happened yet. Why not? This might be a natural consequence of the fact that neural processing is not instantaneous.

A last point: recently, some researchers have expressed reservations about the role of a receptive field map in localization. For instance: "There is more to position encoding than simple spatial receptive fields"⁹⁵, and "... there is something weird with the view that anatomical position serves as the code for perceived position"¹⁰¹. Throughout this review, the same question arises: why should it be more complicated to determine the spatial relationship of two features if one is moving than if both are static? Two peaks of activity in a map of visual neurons should do the trick, but apparently they do not. Perhaps our conception of maps is too simplistic. Perhaps velocity and position are represented together in the same neuronal population and are not always completely dissociable, as is suggested by several works¹⁰²⁻¹⁰⁴. Whitney and Cavanagh¹⁰⁴ observed: "Assigning positions to brief stimuli depends on the configuration of motion signals throughout the visual field". In other words, what happens at one point in a neuronal population is influenced by changes occurring in the whole population. We need models to exploit this idea.

1. Hazelhoff, F. & Wiersma, H. Die Wahrnehmungszelt. *Z. Psychol.* **96**, 181-188 (1924).
2. Schmolesky, M. T. *et al.* Signal timing across the macaque visual system. *J. Neurophysiol.* **79**, 3272-3278 (1998).
3. Ward, F. in *Eye Movements and Psychological Processes* (eds Monty, R. A. & Senders, J. W.) 289-297 (Erlbaum, Hillsdale, New Jersey, 1976).
4. Mateeff, S., Yakimoff, N. & Dimitrov, G. Localization of brief stimuli during pursuit eye movements. *Acta Psychol. (Amst.)* **48**, 133-140 (1981).
5. Brenner E., Smeets, J. B. J. & van den Berg, A. V. Smooth eye movements and spatial localisation. *Vision Res.* **41**, 2253-2259 (2001).
6. Smeets, J. B. J. & Brenner, E. Perception and action are based on the same visual information: distinction between position and velocity. *J. Exp. Psychol. Hum. Percept. Perform.* **21**, 19-31 (1995).
7. Newsome, W. T., Wurtz, R. H. & Komatsu, H. Relation of cortical areas MT and MST to pursuit eye movements. II. Differentiation of retinal from extraretinal inputs. *J. Neurophysiol.* **60**, 604-620 (1988).
8. Paillard, J. Quelques données psychophysiques relatives au déclenchement de la commande motrice. *Année Psychol.* **48**, 28-47 (1948).
9. Aschersleben, G. & Prinz, W. Synchronizing actions with events: the role of sensory information. *Percept. Psychophys.* **57**, 305-317 (1995).
10. Aschersleben, G. in *Cognitive Contributions to the Perception of Spatial and Temporal Events* (eds Aschersleben, G., Bachmann, T. & Musseler, J.) 293-318 (Elsevier, Amsterdam, 1999).
11. Churchland, M. M. & Lisberger, S. G. Experimental and computational analysis of monkey smooth pursuit eye movements. *J. Neurophysiol.* **86**, 741-759 (2001).
12. Dassonville, P., Schlag, J. & Schlag-Rey, M. Oculomotor localization relies on a damped representation of saccadic eye displacement in human and nonhuman primates. *Vis. Neurosci.* **9**, 261-269 (1992).
13. Dassonville, P., Schlag, J. & Schlag-Rey, M. Direction constancy in the oculo-motor system. *Curr. Dir. Psychol. Sci.* **2**, 143-147 (1993).
14. Mitrani, L., Mateeff, S. & Yakimoff, N. Smearing of the retinal image during voluntary saccadic eye movements. *Vision Res.* **10**, 405-409 (1970).
15. Matin, L. & Pearce, D. G. Visual perception of direction for stimuli flashed during voluntary saccadic eye movement. *Science* **148**, 1485-1488 (1965).
16. Bischof, F. & Kramer, E. Untersuchungen und Überlegungen zur Richtungswahrnehmung bei willkürlichen sakkadischen Augenbewegungen. *Psychol. Forsch.* **32**, 185-218 (1968).
17. Hallett, P. E. & Lightstone, A. D. Saccadic eye movements toward stimuli triggered by prior saccades. *Vision Res.* **16**, 99-106 (1976).
18. Hansen, R. M. & Skavenski, A. A. Accuracy of spatial localization near the time of saccadic eye movements. *Vision Res.* **25**, 1077-1082 (1985).
19. Honda, H. Spatial localization in saccade and pursuit-eye-movement conditions: a comparison of perceptual and motor measures. *Percept. Psychophys.* **38**, 41-46 (1985).
20. Honda, H. in *Attention and Performance XIII: Motor Representation and Control*. (ed. Jeannerod, M.) 567-582 (Erlbaum, Hillsdale, New Jersey, 1990).
21. Dassonville, P., Schlag, J. & Schlag-Rey, M. The use of egocentric and exocentric location cues in saccadic programming. *Vision Res.* **35**, 2191-2199 (1995).
22. Schlag, J. & Schlag-Rey, M. Illusory localization of stimuli flashed in the dark before saccades. *Vision Res.* **35**, 2347-2357 (1995).
23. Bockisch, C. J. & Miller, J. M. Different motor systems use similar damped extraretinal eye position information. *Vision Res.* **39**, 1024-1038 (1999).
24. Matin, L. *et al.* Oculoparalytic illusion: visual-field dependent spatial mislocalizations by humans partially paralyzed with curare. *Science* **216**, 198-201 (1982).
25. Bridgeman, B. & Delgado, D. Sensory effects of eye press are due to efference. *Percept. Psychophys.* **36**, 482-484 (1984).
26. Grusser, O.-J., Krizic, A. & Weiss, L.-R. After-image movement during saccades in dark. *Vision Res.* **27**, 215-226 (1987).
27. Mergner, T., Nasios, G., Maurer, C. & Becker, W. Visual localization in space: interaction of retinal, eye position, vestibular and neck proprioceptive information. *Exp. Brain Res.* **141**, 33-51 (2001).
28. Goldberg, M. E. & Bruce, C. J. Primate frontal eye fields. III. Maintenance of spatially accurate saccade signal. *J. Neurophysiol.* **64**, 489-508 (1983).
29. Moschovakis, A. K., Karabelas, A. B. & Highstein, S. N. Structure-function relationships in the primate superior colliculus. II. Morphological identity of presaccadic neurons. *J. Neurophysiol.* **60**, 263-302 (1988).
30. Quaia, C., Optican, L. M. & Goldberg, M. E. The maintenance of spatial accuracy by the perisaccadic remapping of visual receptive fields. *Neural Netw.* **11**, 1229-1240 (1998).
31. Zipser, D. & Andersen, R. A. A back-propagation programmed network that stimulates response properties of a subset of posterior parietal neurons. *Nature* **331**, 679-684 (1988).
32. Duhamel, J.-R., Colby, C. L. & Goldberg, M. E. The updating of the representation of visual space in parietal cortex by intended eye movements. *Science* **255**, 90-92 (1992).
33. Umeno, M. M. & Goldberg, M. E. Spatial processing in the monkey's frontal eye field. Predictive visual responses. *J. Neurophysiol.* **78**, 1373-1383 (1997).
34. Walker, M. F., FitzGibbon, E. J. & Goldberg, M. E. Neurons in the monkey superior colliculus predict the result of impending saccadic eye movements. *J. Neurophysiol.* **73**, 1988-2003 (1995).
35. Honda, H. Perceptual localization of visual stimuli flashed during saccades. *Percept. Psychophys.* **45**, 162-174 (1989).
36. Boucher, L., Groh, J. M. & Hughes, H. C. Afferent delays and the mislocalization of perisaccadic stimuli. *Vision Res.* **41**, 2631-2644 (2001).
37. Pouget, A., Albright, T. & Sejnowski, T. A dynamic model for computing the position of an object from its retinal location and eye position. *Soc. Neurosci. Abstr.* **18**, 1396 (1992).
38. Pola, J. R. & Wyatt, H. J. The time course of the extraretinal signal for saccade-contingent perceived direction may be as fast as the saccade. *Soc. Neurosci. Abstr.* **31**, 58.19 (2001).
39. Sperling, G. in *Eye Movements and their Role in Visual and Cognitive Processes* (ed. Kowler, E.) 307-351 (Elsevier, Amsterdam, 1990).
40. Volkmann, F. C. & Moore, R. K. in *Visual Psychophysics and Physiology* (eds Armington, J. C., Krauskopf, J. & Woodin, B. R.) 353-362 (Academic, New York, 1978).
41. Dassonville, P. Haptic localization and internal representation of the hand in space. *Exp. Brain Res.* **106**, 434-448 (1995).
42. Hershberger, W. Saccadic eye movements and the perception of visual direction. *Percept. Psychophys.* **41**, 35-44 (1987).
43. Kubischik, M. & Bremner, F. Peri-saccadic space representation in monkey inferior parietal cortex. *Soc. Neurosci. Abstr.* **25**, 1164 (1999).
44. Mays, L. E. & Sparks, D. L. Dissociation of visual and saccade-related responses in superior colliculus neurons. *J. Neurophysiol.* **43**, 207-232 (1980).

Although not the first one on this topic, this is the

45. Robinson, D. A. & Fuchs, A. F. Eye movements evoked by stimulation of frontal eye fields. *J. Neurophysiol.* **32**, 637–648 (1969).
46. Sparks, D. L. & Mays, L. E. Spatial localization of saccade targets. I. Compensation for stimulus induced perturbations in eye position. *J. Neurophysiol.* **49**, 45–74 (1983).
47. Schlag, J. & Schlag-Rey, M. Does microstimulation evoke fixed vector saccades by generating their vector or by specifying their goal? *Exp. Brain Res.* **68**, 442–444 (1987).
48. Schlag, J. & Schlag-Rey, M. Colliding saccades may reveal the secret of their marching orders. *Trends Neurosci.* **13**, 410–415 (1990).
49. Dassonville, P., Schlag, J. & Schlag-Rey, M. The frontal eye field provides the goal of saccadic eye movement. *Exp. Brain Res.* **89**, 300–310 (1992).
50. Schlag, J., Schlag-Rey, M. & Dassonville, P. Interactions between natural and electrically evoked saccades. II. At what time is eye position sampled as a reference for the localization of a target? *Exp. Brain Res.* **76**, 548–558 (1989).
51. Schlag-Rey, M., Schlag, J. & Dassonville, P. Interactions between natural and electrically evoked saccades. I. Differences between sites carrying retinal error and motor command signals in monkey superior colliculus. *Exp. Brain Res.* **76**, 537–547 (1989).
52. Dominey, P. F., Schlag, J., Schlag-Rey, M. & Arbib, M. A. Colliding saccades evoked by frontal eye field stimulation: artifact or evidence for an oculomotor compensatory mechanism underlying double-step saccades. *Biol. Cybern.* **76**, 41–52 (1997).
53. Brenner, E. & Cornelissen, F. W. Separate simultaneous processing of egocentric and relative positions. *Vision Res.* **40**, 2557–2564 (2000).
54. Honda, H. Saccade-contingent displacement of the apparent position of visual stimuli flashed on a dimly illuminated structured background. *Vision Res.* **33**, 709–716 (1993).
55. Karn, K. S., Moller, P. & Hayhoe, M. M. Reference frames in saccadic targeting. *Exp. Brain Res.* **115**, 267–282 (1997).
56. Hahnloser, R., Douglas, R. G., Mahowald, M. & Hepp, K. Feedback interactions between neuronal pointers and maps for attentional processing. *Nature Neurosci.* **2**, 746–752 (1999).
57. Cai, R. H., Pouget, A., Schlag-Rey, M. & Schlag, J. Perceived geometrical relationships affected by eye-movement signals. *Nature* **386**, 601–604 (1997).
58. Ross, J., Morrone, M. C. & Burr, D. C. Compression of visual space before saccades. *Nature* **386**, 709–716 (1997).
59. Morrone, M. C., Ross, J. & Burr, D. C. Apparent position of visual targets during real and simulated saccadic eye movements. *J. Neurosci.* **17**, 7941–7953 (1997).
60. Lappe, M., Awater, H. & Krekelberg, B. Postsaccadic visual references generate presaccadic compression of space. *Nature* **403**, 892–895 (2000).
61. Ross, J., Morrone, M. C., Goldberg, M. E. & Burr, D. C. Changes in visual perception at the time of saccades. *Trends Neurosci.* **24**, 113–121 (2001).
62. van Beers, R. J., Wolpert, D. M. & Haggard, P. Sensorimotor integration compensates for visual localization errors during smooth pursuit eye movements. *J. Neurophysiol.* **85**, 1914–1922 (2001).
63. Deubel, H., Schneider, W. X. & Bridgeman, B. Postsaccadic target blanking prevents saccadic suppression of image displacement. *Vision Res.* **36**, 985–996 (1996).
64. Fröhlich, F. W. Über die Messung der Empfindungszeit. *Z. Sinnesphysiol.* **54**, 57–78 (1923).
65. Metzger, W. Versuch einer gemeinsamen Theorie der Phänomene Fröhlichs und Hazelhoffs und Kritik ihrer Verfahren zur Messung der Empfindungszeit. *Psychol. Forsch.* **16**, 176–200 (1931).
66. MacKay, D. M. Perceptual stability of a stroboscopically lit visual field containing self-luminous objects. *Nature* **181**, 507–508 (1958).
67. Nijhawan, R. Motion extrapolation in catching. *Nature* **370**, 256–257 (1994).
- This short paper renewed interest in the flash-lag phenomenon and started an intense debate.**
68. Nijhawan, R. The flash-lag phenomenon: object motion and eye movements. *Perception* **30**, 263–282 (2001).
69. Purushothaman, G., Patel, S. S., Bedell, H. E. & Ogmen, H. Moving ahead through differential visual latency. *Nature* **396**, 424 (1998).
70. Whitney, D. & Murakami, I. Latency difference, not spatial extrapolation. *Nature Neurosci.* **1**, 656–657 (1998).
71. Whitney, D., Murakami, I. & Cavanagh, P. Illusory spatial offset of a flash relative to a moving stimulus is caused by differential latencies for moving and flashed stimuli. *Vision Res.* **40**, 137–149 (2000).
72. Murakami, I. A flash-lag effect in random motion. *Vision Res.* **41**, 3101–3119 (2001).
73. Baldo, M. V. C. & Klein, S. A. Extrapolation or attention shift? *Nature* **378**, 565–566 (1995).
74. Super, H., Spekreijse, H. & Lamme, V. A. F. Two distinct modes of sensory processing observed in monkey primary visual cortex (V1). *Nature Neurosci.* **4**, 304–310 (2001).
75. Allik, J. & Kreegipuu, K. Multiple visual latency. *Psychol. Sci.* **9**, 135–138 (1998).
76. Arnold, D. H., Clifford, C. W. G. & Wenderoth, P. Asynchronous processing in vision: color leads motion. *Curr. Biol.* **11**, 596–600 (2001).
77. Bartels, A. & Zeki, S. The theory of multistage integration in the visual brain. *Proc. R. Soc. Lond. B* **265**, 2327–2332 (1998).
78. Berry, M. J., Brivanlou, I. H., Jordan, T. A. & Meister, M. Anticipation of moving stimuli by the retina. *Nature* **398**, 334–338 (1999).
79. Müller, K., Aschersleben, G., Koch, R., Freund, H. & Prinz, W. in *Cognitive Contributions to the Perception of Spatial and Temporal Events* (eds Aschersleben, G., Bachmann, T. & Müssele, J.) 233–250 (Elsevier, Amsterdam, 1999).
80. Lappe, M. & Krekelberg, B. The position of moving objects. *Perception* **27**, 1437–1449 (1998).
81. Krekelberg, B. & Lappe, M. Temporal recruitment along the trajectory of moving objects and the perception of position. *Vision Res.* **39**, 2669–2679 (1999).
82. Watanabe, K., Nijhawan, R., Khurana, B. & Shimojo, S. Perceptual organization of moving stimuli modulates the flash-lag effect. *J. Exp. Psychol. Hum. Percept. Perform.* **27**, 879–894 (2001).
83. Brenner, E. & Smeets, J. B. J. Motion extrapolation is not responsible for the flash-lag effect. *Vision Res.* **40**, 1645–1648 (2000).
84. Eagleman, D. M. & Sejnowski, T. J. Motion integration and postdiction in visual awareness. *Science* **287**, 2036–2038 (2000).
85. Cai, R. H. & Schlag, J. Asynchronous feature binding and the flash-lag illusion. *Invest. Ophthalmol. Vis. Sci.* **42**, 3830 (2001).
86. Cai, R. H., Schlag-Rey, M. & Schlag, J. Displacement of the moving bar exists in the flash-lag effect. *Soc. Neurosci. Abstr.* **26**, 1502 (2000).
87. Snowden, R. J. Shifts in perception following adaptation to visual motion. *Curr. Biol.* **8**, 1343–1345 (1998).
88. Schlag, J., Cai, R. H., Dorfman, A., Mohempour, A. & Schlag-Rey, M. Extrapolating movement without retinal motion. *Nature* **406**, 38–39 (2000).
89. Cai, R. H., Jacobson, K., Baloh, R., Schlag-Rey, M. & Schlag, J. Vestibular signals can distort the perceived spatial relationship of retinal stimuli. *Exp. Brain Res.* **135**, 275–278 (2000).
90. Bachman, T. & Pöder, E. Change in feature space is not necessary for the flash-lag effect. *Vision Res.* **41**, 1103–1106 (2001).
91. Sheth, B., Nijhawan, R. & Shimojo, S. Changing objects lead briefly flashed ones. *Nature Neurosci.* **3**, 489–495 (2000).
92. Fu, Y.-X., Shen, Y. & Dan, Y. Motion-induced perceptual extrapolation of blurred visual targets. *J. Neurosci.* **21**, RC172 (2001).
93. Deubel, H., Irwin, D. E. & Schneider, W. X. in *Current Oculomotor Research: Physiological and Psychological Aspects* (eds Becker, W., Deubel, H. & Mergner, T.) 65–70 (Plenum, New York, 1999).
94. Krekelberg, B. The persistence of position. *Vision Res.* **41**, 529–539 (2001).
95. Krekelberg, B. & Lappe, M. Neuronal latencies and the position of moving objects. *Trends Neurosci.* **24**, 335–339 (2001).
96. Tolia, A. S. *et al.* Eye movements modulate visual receptive fields of V4 neurons. *Neuron* **29**, 757–767 (2001).
97. Paillard, J. & Amblard, B. in *Brain Mechanisms and Spatial Vision* (eds Ingle, D. J., Jeannerod, M. & Lee, D. N.) 299–329 (Martinus Nijhoff, Dordrecht, 1985).
98. Priebe, N. J., Churchland, M. M. & Lisberger, S. G. Reconstruction of target speed for the guidance of pursuit eye movements. *J. Neurosci.* **21**, 3196–3206 (2001).
99. Krekelberg, B. & Lappe, M. A model of the perceived relative positions of moving objects based upon a slow averaging process. *Vision Res.* **40**, 201–215 (2000).
100. Rao, R. P. N., Eagleman, D. M. & Sejnowski, T. J. Optimal smoothing in visual motion perception. *Neural Comput.* **13**, 1243–1253 (2001).
101. Van der Helden, A. H. C., Müssele, J. & Bridgeman, B. in *Cognitive Contributions to the Perception of Spatial and Temporal Events* (eds Aschersleben, G., Bachmann, T. & Müssele, J.) 19–37 (Elsevier, Amsterdam, 1999).
102. De Valois, R. L. & De Valois, K. K. Vernier acuity with stationary moving Gabors. *Vision Res.* **31**, 1619–1626 (1991).
103. Nishida, S. & Johnston, A. Influence of motion signals on the perceived position of spatial pattern. *Nature* **397**, 610–612 (1999).
104. Whitney, D. & Cavanagh, P. Motion distorts visual space: shifting the perceived position of remote stationary objects. *Nature Neurosci.* **3**, 954–959 (2000).
105. Tian, J.-R. & Lynch, J. C. Corticocortical input to the smooth and saccadic eye movement subregions of the frontal eye field in *Cebus* monkeys. *J. Neurophysiol.* **76**, 2754–2771 (1996).
106. Andersen, R. A., Asanuma, C., Essick, G. & Siegel, R. M. Corticocortical connections of anatomically and physiologically defined subdivisions within the inferior parietal lobule. *J. Comp. Neurol.* **296**, 65–113 (1990).
107. Boussaoud, D., Ungerleider, L. G. & Desimone, R. Pathways for motion analysis: cortical connections of the medial superior temporal and fundus of the superior temporal visual areas in the macaque. *J. Comp. Neurol.* **296**, 462–495 (1990).
108. Cavada, C. & Goldman-Rakic, P. S. Posterior parietal cortex in rhesus monkey. I. Parcellation of areas based on distinctive limbic and sensory corticocortical connections. *J. Comp. Neurol.* **287**, 393–421 (1989).
109. Huerta, M. F. & Kaas, J. H. Supplementary eye field as defined by intracortical microstimulation: connections in macaques. *J. Comp. Neurol.* **293**, 299–330 (1990).
110. Schall, J. D., Morel, A., King, D. J. & Buller, J. Topography of visual cortex connections with frontal eye field in macaque: convergence and segregation of processing streams. *J. Neurosci.* **15**, 4464–4487 (1995).
111. Yin, J., Schlag-Rey, M. & Schlag, J. Comparison of origins of projections from LIP to SEF and FEF in primate. *Soc. Neurosci. Abstr.* **20**, 145 (1994).
112. Schlag-Rey, M. & Schlag, J. in *The Neurobiology of Saccadic Eye Movements* (eds Wurtz, R. H. & Goldberg, M. E.) 361–390 (Elsevier, Amsterdam, 1989).
113. Krautzi, R. J. & Stone, L. S. Tracking with the mind's eye. *Trends Neurosci.* **22**, 544–550 (1999).

Acknowledgements
Support was provided by grants from the National Institutes of Health. We thank E. Brenner, P. Dassonville, R. Cai and J. Park for helpful comments.

 **Online links**

FURTHER INFORMATION
Encyclopedia of Life Sciences: <http://www.els.net/oculomotor/system>
MIT Encyclopedia of Cognitive Sciences: <http://cognet.mit.edu/MITECS/> eye movements and visual attention | oculomotor control | spatial perception
Access to this interactive links box is free online.